

• •

-

-

• •

-

Оглавление

.....	3
.....	4
-10.....	5
.....	5
.....	5
.....	9
.....	9
.....	12
.....	13
.....	13
.....	13
().....	13
().....	14
.....	15
.....	17
.....	17
.....	18
().....	18
/.....	18
.....	18
.....	20
.....	21
.....	23
.....	24
.....	25
.....	25

(EAACI Food Allergy and Anaphylaxis Guidelines, 2014).

3.

(EAACI Food Allergy and Anaphylaxis Guidelines, 2014)

IgE-			
(,	,	()	,
) /			-
/	()	(, -)	-
	,		-
	,		-
,		,	
IgE-			
	30-40%		
	,		
,			
	:		
	,		
	:		
	,		

(IV, D),

(IV, C),

(III, C),

(V,

D) (. 4).

1.
- ;
- (;);
- ;
- ;
- ;
- ;
2.
IgE-
IgE
IgE-
IgE,
IgE,
IgE-
3.
(IgE /)
2-4

**IgE (sIgE)
IgE**

IgE-

(I-III, A-C: Soares-Weiser K, Takwoingi Y, Panesar SS, Muraro A, Werfel T, Hoffmann-Sommergruber K et al. The diagnosis of food allergy: a systematic review and meta-analysis. Allergy 2014;69:76–86).

- ;

- , (HYTEC-288);

- (– ImmunoCAP);

- (Immulite);

- UniCAP Systems, ImmunoCAP.

sIgE

sIgE: 0,01 0,35 / (IgE - 2-5 /).

sIgE,

sIgE

- ImmunoCAP, sIgE, (

(IV, C).

(IV, D)

IgE-

IgE-

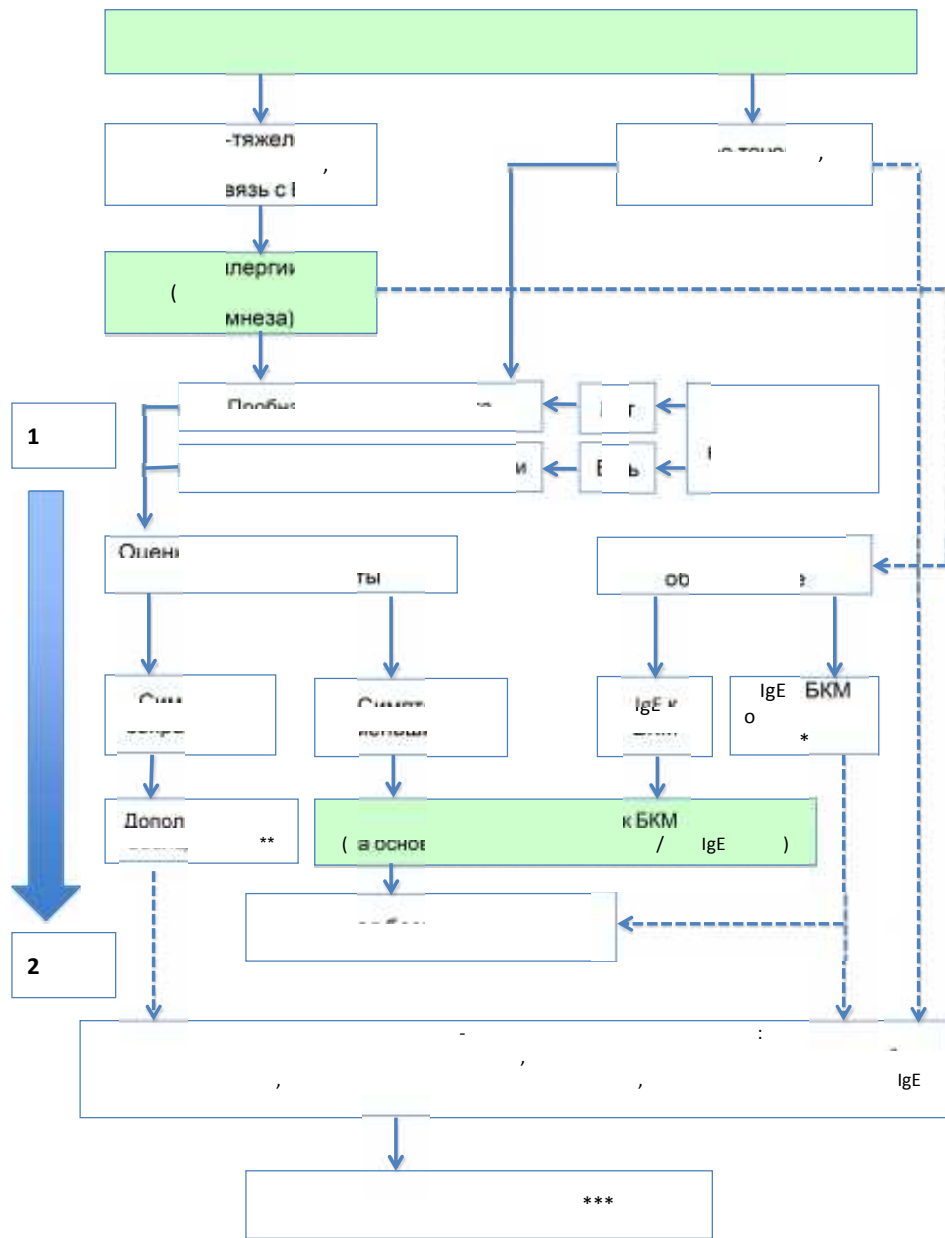
(IV, D)

« »

« »

(IV, D).

()

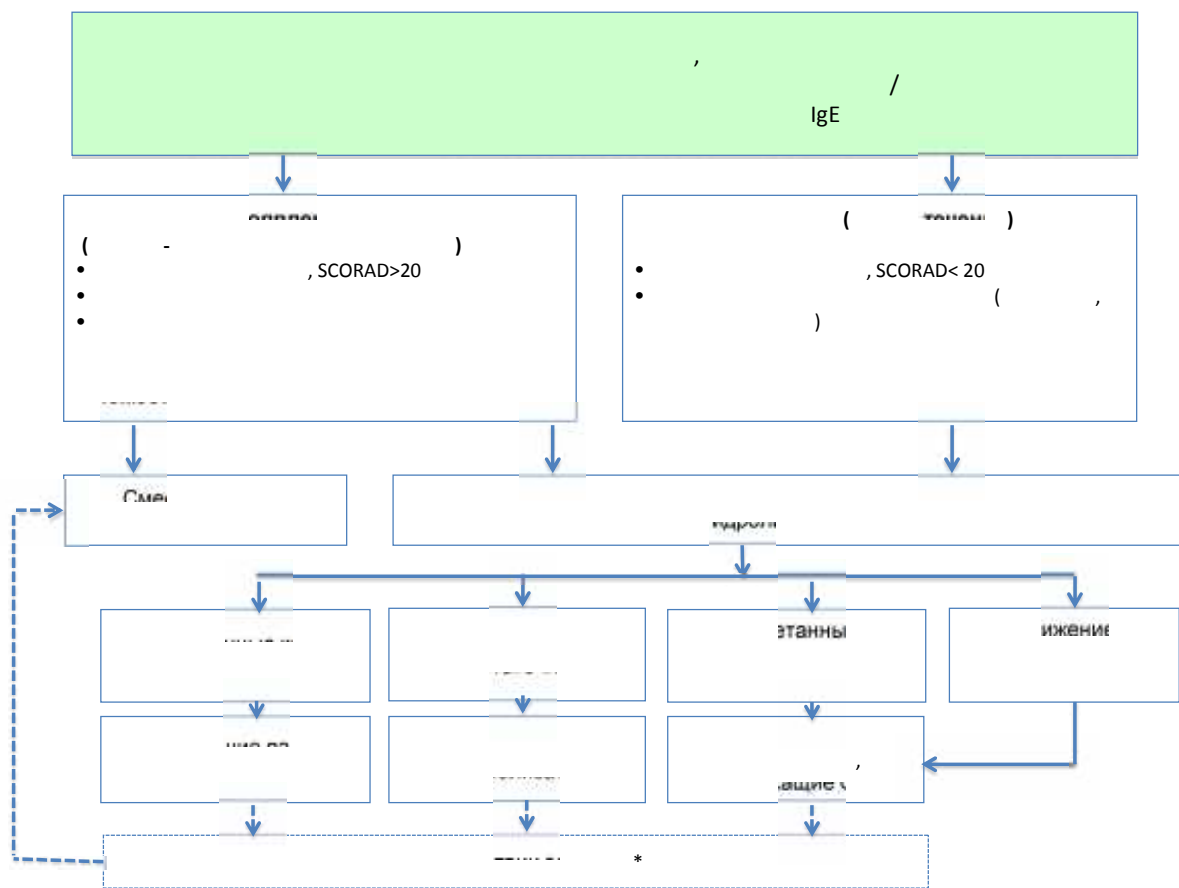


. 1. * — ; ** — ; *** — IgE

(,)

90%

(.6).



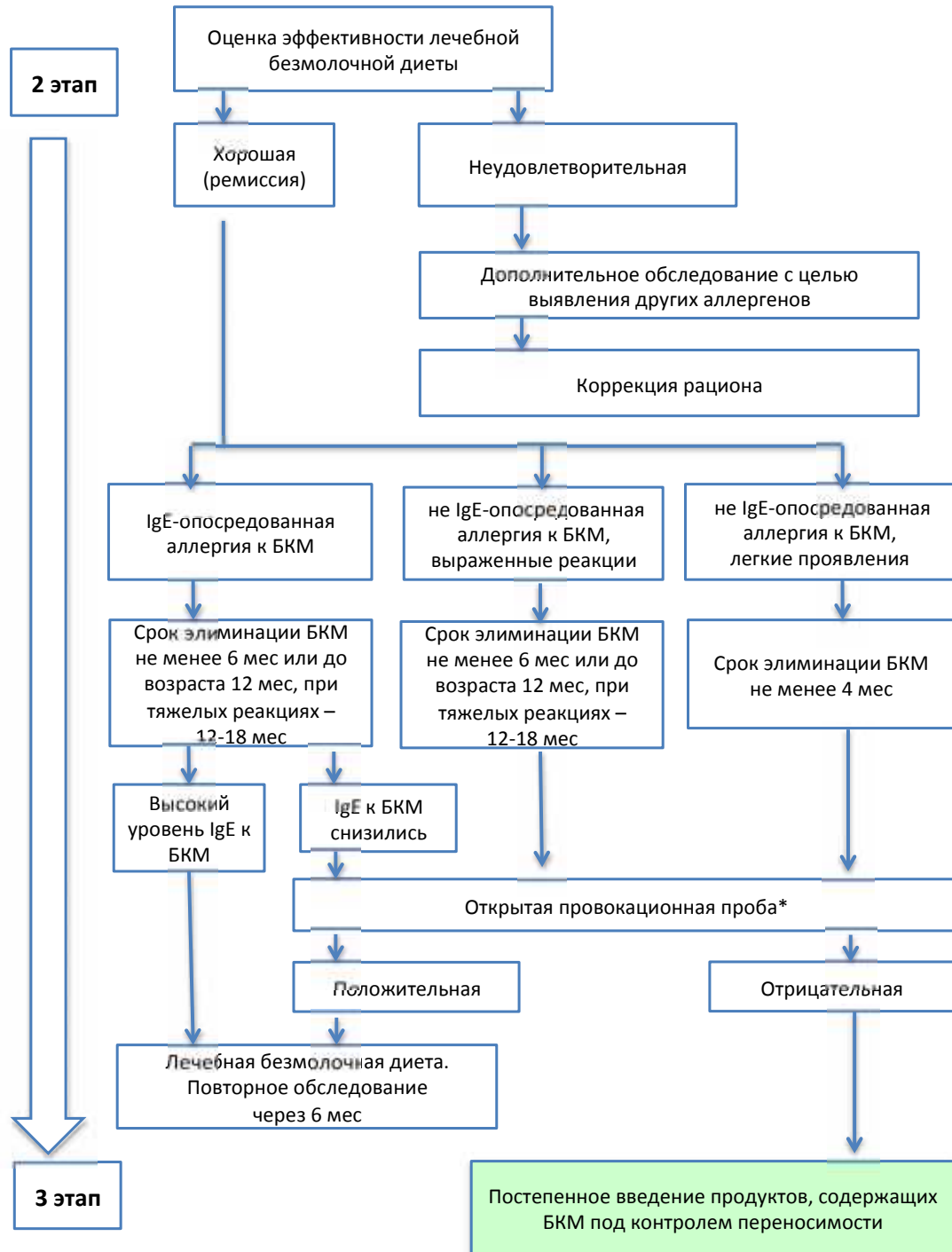
.2.
.* -

, SCORAD (.) ; —

10%

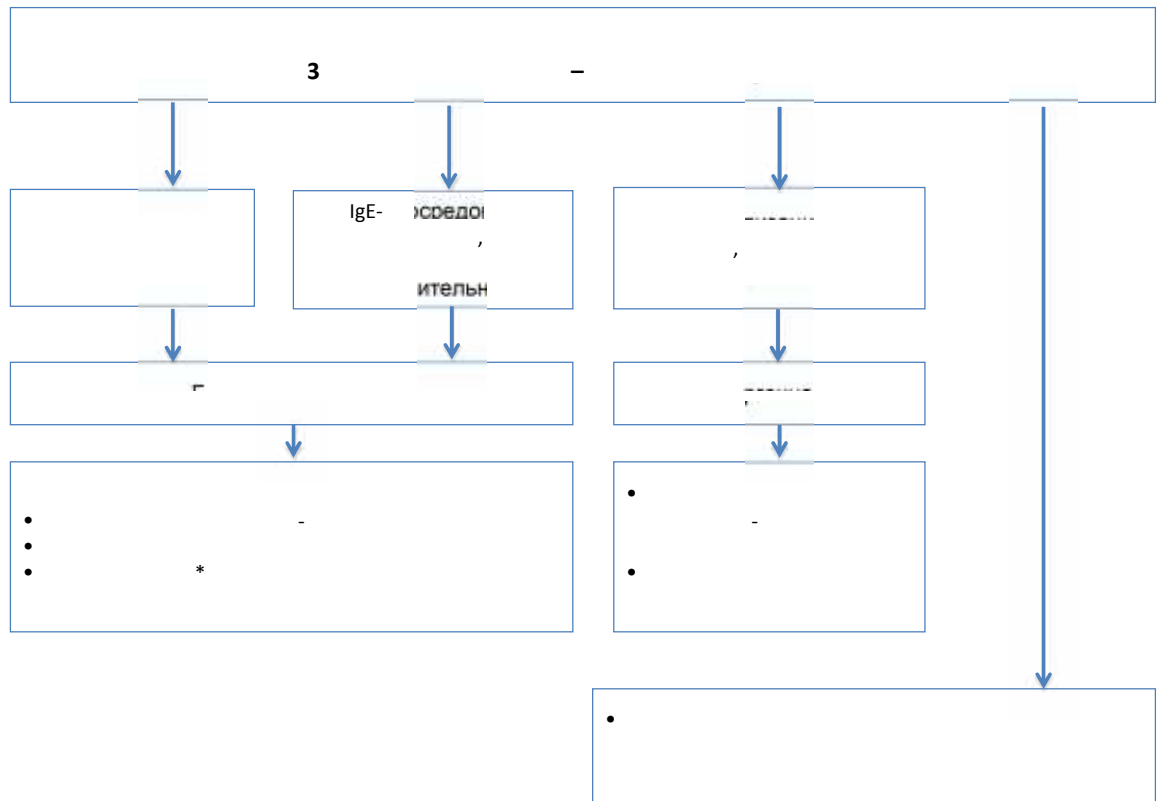
(. 6)

IgE



3.
* —

2



.4.

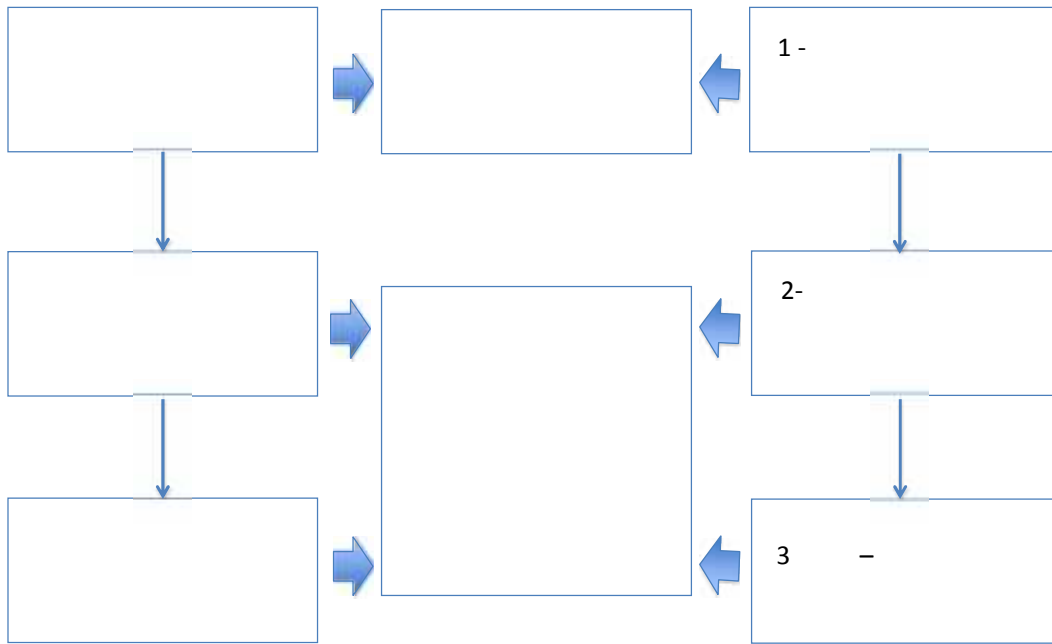
. * -

6

4

6

(.5).



.5.

, , : , , ,
 (, ,), .
 , , , .
 ,
 1-2 ,
 5 (),
 (.).
 5 - 7 . 10 - 30

5),

(

(,) .

: , ,

(D₃: ATX A12AX, A12AA08.) .

ω-3

() .

(0,8-1,6 /) 30-40 .

C01CA24 (

)

(

, - , /) (IV, D).

(IV, D).

2- (- R03AC02)

(.) .

I- (- ATX R06AC03, - ATX R06AX, - ATX R06AA04)

II (III, C).

(IV, D).

• (2,5), 6 11 (ATX: R06AX27) 1 5 1,25
—5 (1 10 2,5 (5) 1) , 12

- (ATX: R06AX13) 2 .
30 — 10 1 5 1 ,
- (ATX: R06AE09) 6 — 5
2 6 — 2,5 / .
- (ATX: R06AX28) 12
10 1 / .
- (ATX: R06AX26) 6-12 30 1
12 — 120-180 1 .
- (ATX: R06AE07) 6 12 . 2,5 1
1 6 2,5 2 5 1
6 — 10 5 2 .

(III, C).

(III, C).

(IV, D).

(IV, D).

(IV, D).

(IV, D).

(IV, D).

h2	-	2
FLOW-CAST	-	- ,
EK-CAST		
CAST-COMBI		-