

• •



« » «
», ,

...»

XVIII
» 14 2015 . VII
19-23 2015 .

«

: -
... (. . . . ,
... ,) , «
» (- . . . , . . . - , . . . , . . .
 , ,) , « -
» (. . . , . . . ,) ,
(. . . .) .

/

, .

-10

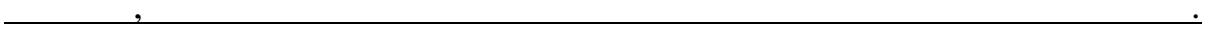
.
4
6
6
6
6
8
9
9
14
17
17
22
24
24
26

Intercollegiate Guideline Network; URL: <http://www.sign.ac.uk>.
SIGN (Scottish

EMBASE, ORPHANET, MEDLINE, OMIM.

(<http://newenglandconsortium.org>)

1994
2014



: - ,
;
- ;
-
(, 1)
(2).

(Good Practice Points, GPPs)

1.

-	
I	-
II	.
III	., .
IV	.,
V	.

2.

	I II, III IV
	II, III IV ,

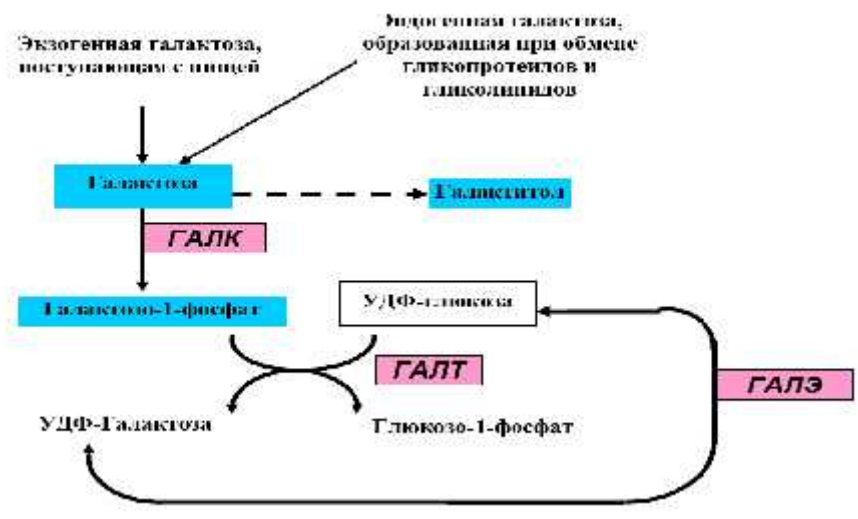
	II, III, IV ,
D	

,
 ,
 .
 -
 ,
 (-1-),
 .
 - - .
10: E74.2 - (;
).

1: 20 000,

GALT.

(gala, galaktos -)
 - C-4 , ,
 .
 ,
 - ,
 (1).



-1- ;
 - ;
 - -4- ().

1.

: -1- (),
 () - ()-4- () (1).

(1).

1.

-1- - ()	<i>GALT</i>	9p13.3
()	<i>GALK1</i>	17q25.1
-4- (,)	<i>GALE</i>	1 36.11

,
. ,
,
, ,
, , , . ,
, , , . , . ,
, , ,
;

(-) - ,

. - ,
- ,
, ,
-1- ,
,

() :

;

.

,

.

,

,

(, -6-),

.

,

.

:

.

,

,

:

I. - I ,
-1- - ().

II. ()(II).

III. - -4- () -

III .

-

,

-

,

.

-1-

5%

GALT,

(G).

5 - 25%

(D/D),

(

D)

;

D/G,

25%.

(2),

50%

II

().

1:100 000.

II

III

(

).

-4-

-

2

()

().

()

(

).

2-3

100%

2

E. coli;

- :
-
-
-
-

;

;

,

,

,

.

«
 »,
 4-
 7- - .
 .
 100%
 ,
 -1- (2).

2.

	(/)
	< 7,2
()	7,2-10
	> 10

7,2 /

GALT

< 2,5 / Hb,

- < 1,3 / Hb.

: 1)

GALT

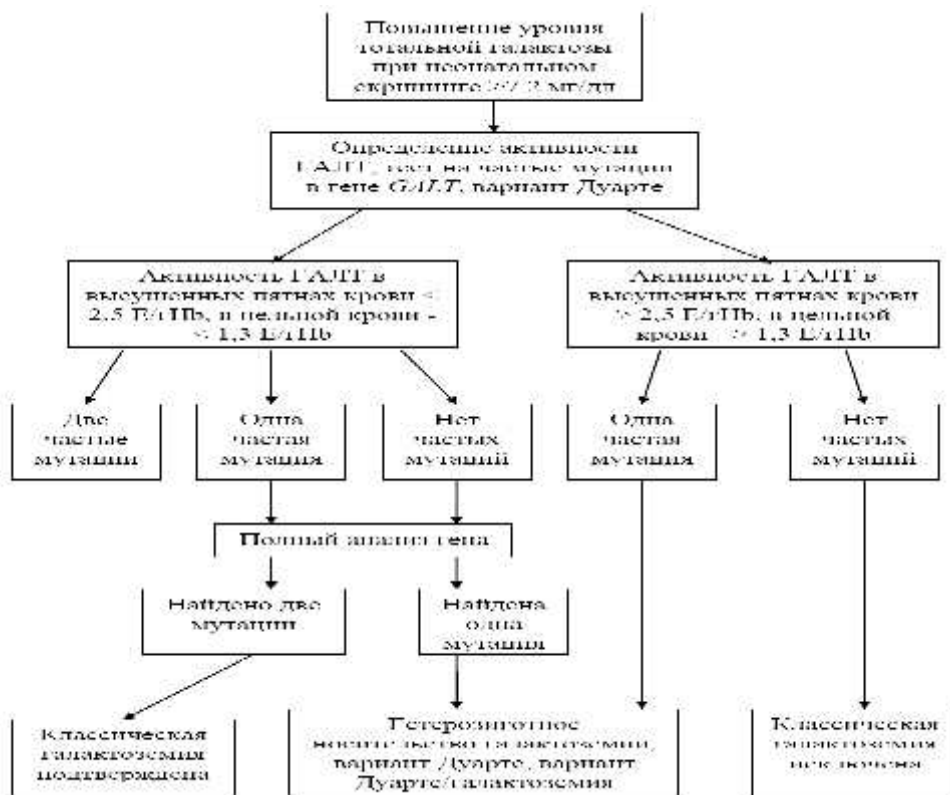
; 2)

GALT:

.Gln188Arg, p.Lys285Asn, IVS3-2a->c, p.Met142Lys, p.Leu358Pro,
82,1%

, p.Asn314Asp (N314D,).

2.



2.

I

GALE,

- -4- (),

III .

:

- ,
(, , ,);
- , (,
, , - , -
, , , - , -
, , , - ,
, , , ,);

- (,
, - ,
, , ,
, ;

(Byler);

- ,
(Ductus venosus) 2-3-5

GALT GALE.

- :
- ,
- ,

)

..

- I
 - II
 - -4-
 ()- III
 -

,

-

.

,

,

.

(

,

,

,

.)

,

,

(

,

,

,

,

,

,

.

.)

.

(

,

),

-

-

,

(3).

3. , ,

-	(, , , , ,) - (
-);
-	;
-	, ;
-	.
-	, , ;
-	, ;
-	.

/ -
-1-

, - , .

.

, ,

,

.

,

(4).

4.

(100).

	1,7	3,4	7,0	65,4
	1,8	3,6	6,7	67
	1,6	3,5	7,0	66
	1,7	3,5	7,2	67
	1,6	3,3	7,9	67

(5).

1 : 1.

5.

(100).

LIPIL	1,9	3,8*	6,9	68
1 LIPIL	1,9	3,4	7,5	68,0
2 LIPIL	2,0	3,0	9,0	69,0
	1,6	3,5	7,2	66,0

*

60%

(6).

6.

(100).

0	1,42 (80 : 20)*	3,7	7,2	68,0
	1,4(50 : 50)*	3,45	7,4	66

* (%)

/

4 6

:

/

()

6 .
 , (, ,
 .)(7).
 7.

	()
	4-6
	-
	4-6
	5-6
	5-6
	-
	6
()*	12
	8
	-
, ()	-
(, ,)	7
	4-6
	-

* - 1 , 2-3

(
):
 5 100 . 5 20
 100 ,
 ; 20
 100 .

(
) ,
() .

’ ’
, .
:
,
, ,
, .
, ,
D,
.

I

,
,
.
/
,
21 .

- , ,

, , , .
 .
 (+ -1-)
 1 3 , 4
 1 .
 / . ,

,
 - .
 (10
), (-
 , .), -
 , ,
 , (/),

12-
 1

15- .
 1 2 .
 .
 .

-

25%

10-12

- 15-18

-1-

()

GALT GALE.

()

(« »), ()

;

,
 ,
 .
 .
 ,
 ;
 ,
 .
 ,
 .
 ,
 /
 ;
 ,
 .
 D,
 .
 ,
 ,
 ,
 .

1. . . , - ,
 , , ,

 2013. 97 .

2. MP 2.3.1.2432-08 "

" (. 18
 2008).

3. Akar M, Celik M, Kasapkara CS, Ozbek MN, Aldudak B, Tuzun H. Mutational analysis of the galactose-1-phosphate uridylyltransferase (GALT) gene in southeast part of Turkey: a regional report. *Genet Couns*. 2015;26(1):91-4.
4. Azar SR, Naiebi R, Homami A, Akbari Z, Kianmehr A, Mahdizadehdehosta R, Najafzadeh F. Expression and response surface optimization of the recovery and purification of recombinant D-galactose dehydrogenase from *Pseudomonas fluorescens*. *Indian J Biochem Biophys*. 2015 Feb;52(1):68-74.
5. Timmers I, van den Hurk J, Hofman PA, Zimmermann LJ, Uluda K, Jansma BM, Rubio-Gozalbo ME. Affected functional networks associated with sentence production in classic galactosemia. *Brain Res*. 2015 Aug 7;1616:166-76.
6. Liu Y, Sidhu A, Bean LH, Conway RL, Fridovich-Keil JL. Genetic and functional studies reveal a novel noncoding variant in GALT associated with a false positive newborn screening result for galactosemia. *Clin Chim Acta*. 2015 Jun 15;446:171-4.
7. Hegarty R, Hadzic N, Gissen P, Dhawan A. Inherited metabolic disorders presenting as acute liver failure in newborns and young children: King's College Hospital experience. *Eur J Pediatr*. 2015 Apr 24.

8. Özbek MN, Öcal M, Tanrıverdi S, Baysal B, Deniz A, Öncel K, Demirbilek H. Capillary bedside blood glucose measurement in neonates: missing a diagnosis of galactosemia. *J Clin Res Pediatr Endocrinol*. 2015 Mar 5;7(1):83-5.
9. Porta F, Pagliardini S, Pagliardini V, Ponzzone A, Spada M. Newborn screening for galactosemia: a 30-year single center experience. *World J Pediatr*. 2015 May;11(2):160-4.
10. van Erven B, Römers MM, Rubio-Gozalbo ME. Revised proposal for the prevention of low bone mass in patients with classic galactosemia. *JIMD Rep*. 2014;17:41-6.
11. Pyhtila BM, Shaw KA, Neumann SE, Fridovich-Keil JL. Newborn screening for galactosemia in the United States: looking back, looking around, and looking ahead. *JIMD Rep*. 2015;15:79-93.
12. Functional and structural impact of the most prevalent missense mutations in classic galactosemia.
Coelho AI, Trabuco M, Ramos R, Silva MJ, Tavares de Almeida I, Leandro P, Rivera I, Vicente JB.
Mol Genet Genomic Med. 2014 Nov;2(6).