

1

• •

« » « »,
»,

• • • „ • • • •

» 14 XVIII
2015 . VII
19-23 2015 .

«

: «

» (.), -

. . . (. . . „ . . . ,

), « » (- . , .

. . . - , . . . „ . . . , , . . . „

. . . , ,),

« - » (. ,

).

/

, .

-10

.
4
6
6
6
7
10
13
16
16
28
31
31
32
33

_____, _____ / _____ .
SIGN (Scottish Intercollegiate Guideline Network; URL: <http://www.sign.ac.uk>).

_____, MEDLINE, EMBASE, ORPHANET, _____, OMIM.

_____, _____ (http://newenglandconsortium.org)

_____. 1995
2015 .

_____, _____ .

: _____ - _____ ,

_____;
- _____ ;

_____.
(_____ , _____ 1)
(_____ 2).

(Good Practice Points, GPPs)

1.

-	
I	-
II	.
III	., ..
IV	.,
V	.

2.

	I II, III IV
	II, III IV ,

	II, III, IV ,
D	

, , .

1 (-

, 1) - -

, , -

(GCDH).

3-OH-

(3- -),

1 ,

/

- ,

.

-10 E72.3

1 (1)

1:50 000

1

,

- 1:300.

400

. 1

1,

1

1,

GCDH

19p13.2.

GCDH

200

R402W,

12 - 40%

: P248L E365K

IVS 1

+5G>T A421V

(GCDH)

. GCDH

438

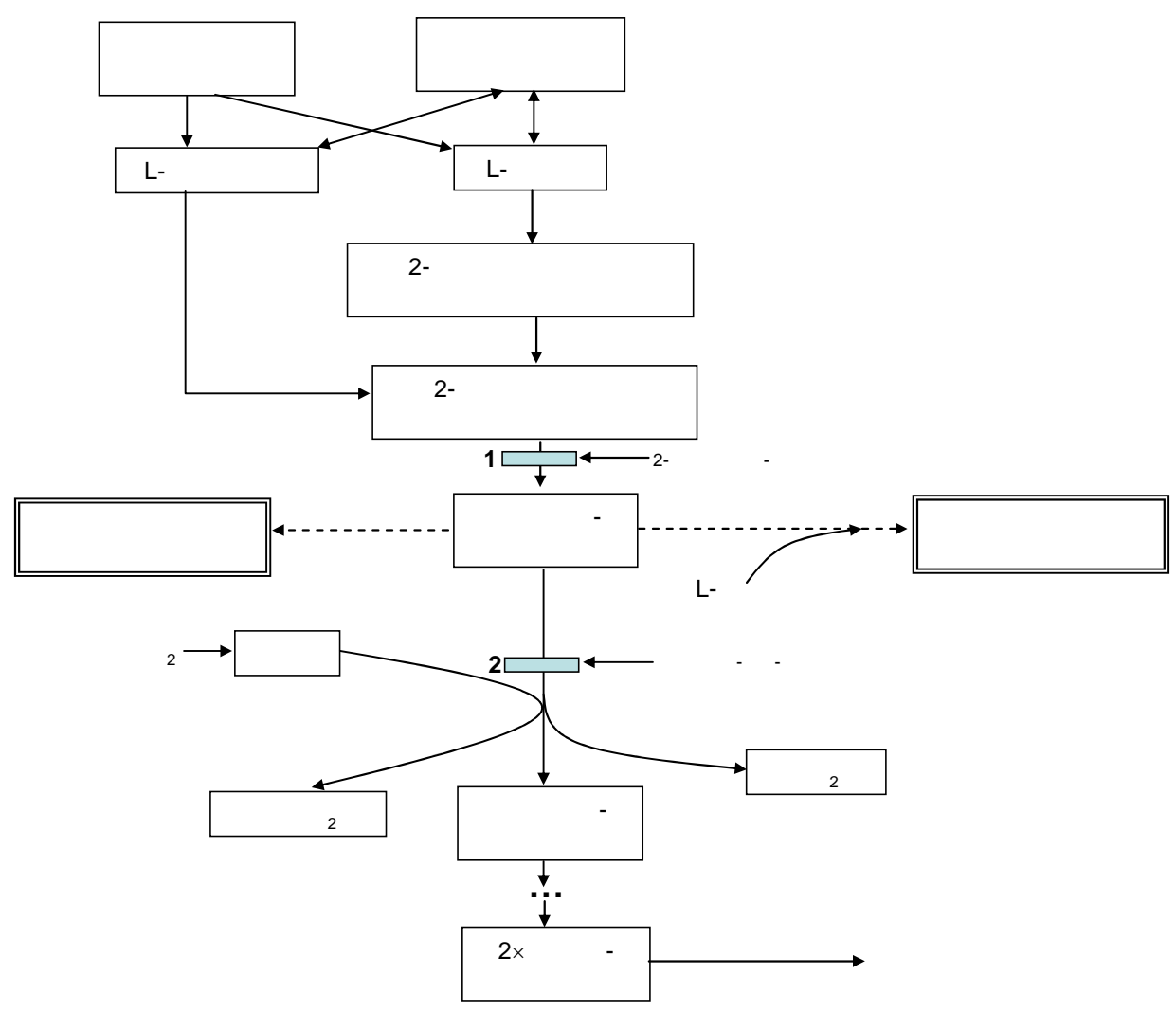
, N-

(44

)
 GCDH 2 -
 - ().

3-OH-

(.1).



.1

,

,

1:

,
 -
 1
 /
 (,
),
 1
 ,
 ().
 -
 « »
 , 3-OH-
 , N- -
 ,
 2+
 .
 -
 - /
 1. , 3- -
 , -
 ,
 .

« »

, , , , , - . ,

, . « »

, , (, ,),

, . : , , - , . :

« » ,

/ 25% , 1 .

, , , . , .

-

.

,

,

.

,

,

,

.

,

.

.

-

.

1

10-30%

,

,

-

.

/

1.

I

«

».

1

,

,

1

(3).

3. - 1*., ,

	- ; - ; - ; -	- - () - , - . -	- - -
		« »	1,
-	- / - - -	- / - (,) -	- - , - ()

*Hoffmann G.F., Athanassopoulos S., Burlina A.B., et all. 1996

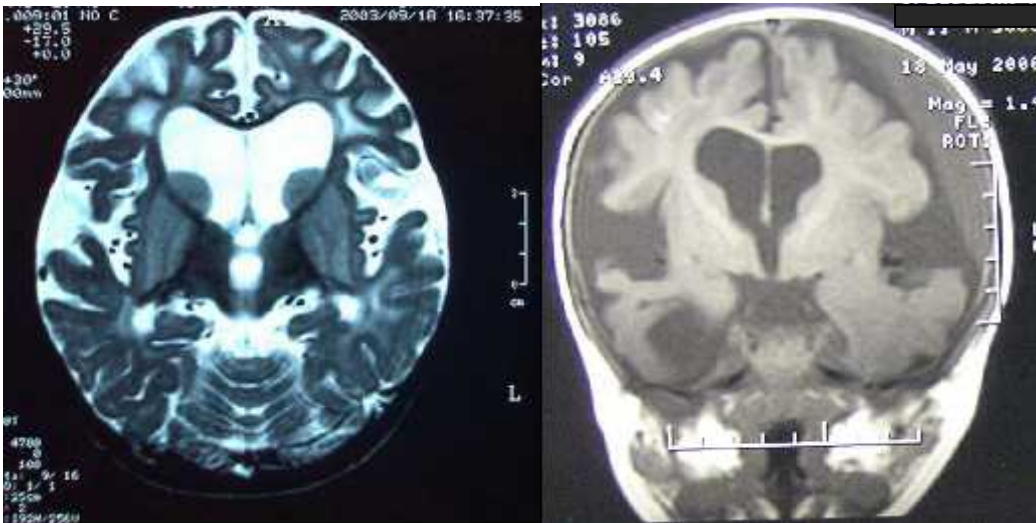
1
:
- / ,
, /
.
, .
1
« »
95%.
« »

1

U-

1

2(,).



2.

1.

«
»
«
»

()¹
 ()
 /
 ().
 , 3- -
 .
 , - - .
 1
 , -
 3-OH-
 , 1 .
 () -
 , .
 1
 : 3-
 , GCDH /
 GCDH (D).
 ()
 1.
 (5DC)
 1
 , 1
 ,
 .

1

C5DC

(B).

1

:

3-

GCDH (D).

3-OH-

3-OH-

,

,

.

.

I

I

-

-

-

-

,

,

,

,

L-

.

1

. *L-*

/ / , 50 / / L- 100
 . 1 L- 6
 (C).

- 1.

100-200

1. « »

, (D).

3-OH-

. (, ,
 .). 6 - 9%
 0,6-2%. (,)

: - ; -

(4) (C).

4.

*

	(.)	,	,	,	
« 14 -trp,- lys»	14	23	50,4	472	0 1
« 20 -trp,- lys»	20	18	50,8	445	1
« 40 --trp,- lys»	40	13	32,2	406	1
« 70 -trp,- lys»	70	0	5,8	303	1
MTVI Anamix GA1	13,1	23	49,8	466	0 1
XLYS,TRY	79	-	4	332	1

*_

, : , , (,)

(5).

5. () * ()

	1	
	/	
0 - 3	80-100	10-20
3 - 6	70-90	10-15
6 - 9	60-80	10-12
9 - 12	50-70	10-12
1 - 4	55-65	8-12
4 - 7	45-55	7-11
7 - 11	35-45	4-10
11- 15	30-40	4-6
15- 18	20-30	3-5
11- 15	30-40	4-6
15- 18	35-45	6-8

*Phyllis B. Acosta Nutrition Management of Patient with Inherited Metabolic Disorders-Jones and Bartlett Publishers- 2010 p.476

11-14	1,0	0,76	0,95	69 /
14-18	0,8	0,64	0,85	76 /

1- Recommended Dietary Allowances 10th edition. Washington. DC: National Academy Press, 1989.

2- World Health Organization (1985): Energy and protein requirements. Report of a Joint FAO/WHO/UNU Expert Consultation(1985). WHO Tech Rep Ser No 724, Geneva.

3-Reproduced from Reports of the Scientific Commit for food (thirty first series) 1993.

4- «

18) .2.3.1.2432-08 (.
2008 .)

7.

*.

/ /						
	0-6	7-12	1-3	4-8	9-13	14-18
	36	32	21	16	17-15	15-14
	88	43	28	22	22-21	21-19
	156	93	63	49	49-47	47-44
	107	89	58	46	46-43	43-40
+	59	43	28	22	22-21	21-19
+	135	84	54	41	41-38	38-35
	73	49	32	24	24-22	22-21
	28	13	8	6	6	6-5
	87	58	37	28	28-27	27-24

*World Health Organization (1985): Energy and protein requirements. Report of a Joint FAO/WHO/UNU Expert Consultation(1985). WHO Tech Rep Ser No 724, Geneva.

8.

	(%)	(/)
	9	90
	8	80
	8	80
	7	70
	6	60
	6	60
	6	60
	2-8,5	20-85
	2-6,5	40-65
	4-6,5	20-65
	2-4	20-40

« »

. , , .
: , ,
,

6 (B).

« » ,

. ,
« »

:

- ,
(
);

- , ;

- ,

L- ;

- - .

1

, ,

9. 1*.

	0-6	7-12	1-3	4-6	6
/ /	100	90	80-60	60-50	(Dewey et al 1996)
/ /	20	17	17-13	13	13
(/ /)	1,4-1,3	1,5-1,3	1,4-1,3	1,3-1,1	1,3-1,1
* (/ /)	1,3-0,8	1,0-0,8	0,8	0,8	0,8
() (/ /)	2,7-2,1	2,5-2,1	2,2-2,1	2,1-1,9	2,1-1,9
(/ /)	115-80	95-80	95-80	90-78	90-78
(%)	100	100	100	100	>100
/ /	100	100	100	50-100	30-50

* Kölker S. et al. 2007

**

« »

:

, , (/
 , , ,
). 6

1 .

38,5⁰ ,

10.

10.
 al. 2007)

(Kölker S. et

.				
120%				
120% (/ /) ¹	0-6	7-12	1-3	4-6
	98-128	96-109	98-109	96-98
.				
20%	15-20 / /			
20%	1-2 / / , ,			2-3
	/ /			

		150 / /
	-	0,05 / /
	()
L-	100-200	/ /
	150	/
.		
	-	24-48 ,
	3-4	.
		,
	1-2	.
(0,8-1,3	/ /
)		per os
.		
-		38,5 – 10-15
	/ /	²
-		
	0,1	/ (3)
-	1,0	/ (, 3-4 / / , 0,5-
		, 3-4) (
)
-		
.	-	
-		, , , , -
		,
		, , , , , , ,
	/	, , , , , , ,
		, pH ,

1_ « »
120% ,
30-40% ;
2_ 1 ,

- .
- (95% ,
-);
- (4-40%);
- (10-30%);
- .

1

),

(,

5 .

(D).

«

»

«

»

1

(

)

1

(D).

(D).

I

38,5⁰

12

2

24-48 (11).

11. (Kölker S. et al. 2007)

	%	/100	()
0-1	10	40	.150 /
1-2	15	60	120 /
2-6	20	80	1200-1500
6			0-6
B.			
		24 48 ,	
			(2)
C.			
L-		L :200 / /	
		38,5 ⁰	
		10-15 / / ,	3-
	4	60 / .	

I

).

- , ,
 , . (, ,
 .)

· ,
 , (D).

- ()
 · ,
 L- (D).

(/) ,
 « » .
 , ,
 , (12) (D).

12. (Kölker S. et al. 2007).

		()		
		0-12	1-6	6
) (1-2	3	-12 6

		,		
()	,	1-2	3	6-12
+		6	6	-12 6
		,		
	,	3	6	12
-	,	3	6	12
(/)		« »		

(10

),

.

.

(13).

13.

,

«

»

(D)

	·
	« » ·
-	· , · 1. ,
	·
(, ,)	/ 1, / · · ,
,	(), ,
	38,5 ⁰ ,
	, :

-

,

-

.

.

L-

,

.

.

3-OH-	3-
GA	
GCDH	-
T1W	1
T2W	2
1	1
-	
	-
Good clinical practice (GSP)	
Good practice points (GPPs)-	

1. Aicardi Jean. Diseases of the Nervous System in Childhood. 2-nd Edition. 1998. 897 .
2. Bahr O., Mader I., Zschocke J., Dichgans J., Schulz J.B. Adult onset glutaric aciduria type I presenting with a leukoencephalopathy. //Neurology. 2002. V. 59. P.1802-1804.
3. Baric I., Wagner P., Feyh P., Liesert M., Buckel W., Hoffmann G.F. Sensitivity and specificity of free and total glutaric acid and 3-hydroxyglutaric acid measurements by stable-isotope dilution assays for the diagnosis of glutaric aciduria type I. //J. Inher. Metab. Dis. 1999. V. 22. P. 867-882
4. Biery B.J., Stein D.E., Morton D.H., Goodman S.I. Gene Structure and Mutations of Glutaryl-Coenzyme A Dehydrogenase: Impaired Association of Enzyme Subunits That is Due to an A421V Substitution Causes Glutaric Acidemia Type I in the Amish. // Am. J. Hum. Genet. 1996. V. 59. P. 1006-1011.
5. Bjugstad K.B., Goodman S.I., Freed C.R. Age at symptom onset predicts severity of motor impairment and clinical outcome of glutaric acidemia type I. //J. Pediatr. 2000. V.137. P. 681-686.
6. Brandt N.J. Symptoms and Signs in Organic Acidurias. //J. Inher. Metab. Dis. 1984. V. 7. P.23-27.
7. Brismar J., and Ozand P.T. CT and MR of the brain in glutaric acidemia type I: a review of 59 published cases and a report of 5 new patients. // AJNR Am. J. Neuroradiol. 1995. V.16. P.675-683.
8. Busquets C., Merinero B., Christensen E., Gelpi J.L., et al Glutaryl-CoA Dehydrogenase Deficiency in Spain: Evidence of Two Groups of Patients, Genetically, and Biochemically Distinct. // Pediatr. Res. 2000. V.48. P. 315-322.

9. Caffey J. The whiplash shaken infant syndrome: manual shaking by the extremities with whiplash-induced intracranial and intraocular bleedings, linked with residual permanent brain damage and mental retardation. //Pediatrics. 1974. V.54. P. 396-403.
10. Chalmers R.A., Bain M.D., Zschocke J. Riboflavin-responsive glutaryl CoA dehydrogenase deficiency. //Mol. Genet. Metab. 2006. V.88. P.29-37.
11. Chow C.W., Haan E.A., Goodman S.I., Anderson R.M., Evans W.A., Kleinschmidt-DeMasters B.S., Wise G., McGill J.J., Danks D.M. Neuropathology in glutaric acidemia type 1. // Acta. Neuropathol. 1988. V.76. P.590-594.
12. Corral I., Martinez C.J.C., Martinez-Pardo M., Gimeno A. Glutaric aciduria type 1: diagnosis in adulthood and phenotypic variability. //Neurologia. 2001. V.16. P.377-380.
13. Desai N.K., Runge V.M., Crisp D.E. Magnetic resonance imaging of the brain in glutaric acidemia type I: a review of the literature and a report of four new cases with attention to the basal ganglia and imaging technique. //Invest. Radiol. 2003. V.38. P.489-496.
14. Dunger D.B., Snodgrass G.J.A.I. Glutaric Aciduria Type I Presenting with Hypoglycaemia. //J. Inher. Metab. Dis. 1984. V. 7. P.122-124.
15. Forstner R., Hoffman G.F., Gassner I., Heideman P., DeKlerk J.B.C., Lawrenz-Wolf B., Doringe E., Weib-Wichert P., Troger J., Colombo J.P., Plochl E. Glutaric aciduria type 1: ultrasonographic demonstrations of early signs. //Pediatr. Radiol. 1999. V.29. P.138-143.
16. Funk C.B., Prasad A.N., Frosk P., Sauer S., Kolker S., Greenberg C.R., Del Bigio M.R. Neuropathological, biochemical and molecular findings in a glutaric acidemia type 1 cohort. //Brain. 2005. V.128. P.711-722.
17. Gilles L., Raymond D. Adams., Edwin H. Kolodny. Neurology of Hereditary Metabolic Diseases of Children, 2nd ed, New York. 1996. 379p.

18. Goodman S.I. Prenatal diagnosis of glutaric acidemias. // *Prenat. Diagn.* 2001. V. 21. P. 1167-1168.
19. Goodman S.I., Frerman F.E. Organic Acidemia Due to Defects in Lysine Oxidation: 2-ketoadipic Acidemia and Glutaric Acidemia. // *The Metabolic and Molecular Basis of Inherited Disease*. eighth ed., McGraw-Hill, New York. 2001. P. 2195–2204
20. Goodman S.I., Stein D.E., Schlesinger S., et al Glutaryl-CoA Dehydrogenase Mutations in Glutaric Acidemia (Type I): Review and Report of Thirty Novel Mutations. // *Hum Mutat.* 1998. V.12. P. 141-144.
21. Greenberg C.R., Prasad A.N., Dilling L.A., et al Outcome of the First 3-Years of a DNA-Based Neonatal Screening Program for Glutaric Acidemia Type 1 in Manitoba and Northwestern Ontario, Canada. // *Mol. Genet. Metab.* 2002. V.75. P.70-78.
22. Hartley L.M., Khwaja O.S., Verity C.M. Glutaric Aciduria Type 1 and Nonaccidental Head Injury. // *Pediatr.* 2001. V.107. P.174-176.
23. Heidenrieck R., Natowicz M., Hainline B.E., et al Acute extrapyramidal syndrome in methylmalonic acidemia: "Metabolic stroke" involving the globus pallidus. // *J. Pediatr.* 1988. V.113. P.1022.
24. Hoffmann G.F., Athanassopoulos S., Burlina A.B., et al. Clinical Course, Early Diagnosis, Treatment, and Prevention of Disease in Glutaryl-CoA Dehydrogenase Deficiency. // *Neuropediatr.* 1996. V. 27. P. 115-123.
25. Hoffmann G.F., Bohles H.J., Burlina A., et al Early signs and course of disease of glutaryl-CoA dehydrogenase deficiency. // *J. Inher. Metab. Dis.* 1995. V.18. P.173-176.
26. Hoffmann G.F., Gibson K.M., Nyhan W.L., et al Neurological manifestations of organic acid disorders. // *Eur. J. Pediatr.* 1994. V.153. P.94-100.

36. MP 2.3.1.2432-08 "

" (.
2008).

18